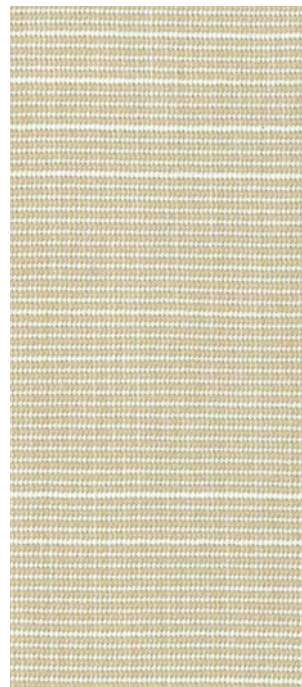


Slub Solids



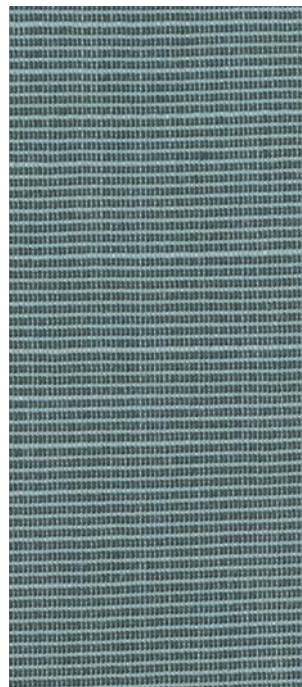
R-791 BEIGE SLUB TWEED
47"



R-794 SAND SLUB TWEED
47"



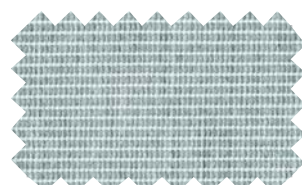
R-793 LINEN SLUB TWEED
47"



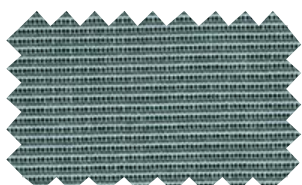
R-792 TAUPE SLUB TWEED
47"

*REAcacril® slub fabrics are visually different from front to back. Either side is usable. Be careful in orientation.

Tweeds Solids



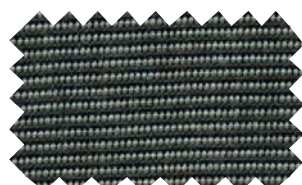
R-197 LEAD TWEED **NEW**
47"



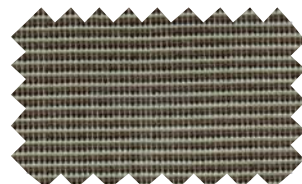
R-776 TAUPE TWEED **NEW**
47"



R-774 SMOKE TWEED **NEW**
47"



R-770 CHARCOAL TWEED
47" / 60"



R-775 LINEN TWEED
47" / 60"



R-239 YELLOW TWEED **NEW**
47"



R-773 RED TWEED
60" Only

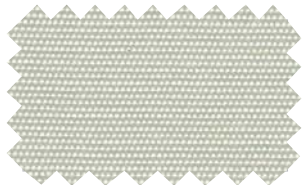


R-772 BLUE TWEED
60" Only

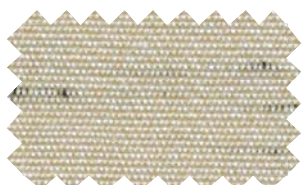


R-771 GREEN TWEED
60" Only

PREMIUM COLORS



R-122 SEASHELL
47"



R-180 SAND
47"



R-222 OAK BUFF **NEW**
47"



R-143 HEMP BEIGE
47" / 60"



R-567 ORANGE
47" / 60"



R-176 RED
47" / 60"



R-195 CACAO
47"



R-117 RAW
47" / 60"



R-126 LINEN
47" / 60"



R-100 BEIGE
47" / 60"



R-149 CORN **NEW**
47"



R-185 PUMPKIN **NEW**
47" / 60"



R-182 VERMILLION
47" / 60"



R-243 TAPENADE **NEW**
47"



R-217 IVORY **NEW**
47"



R-220 ARGENT **NEW**
47"



R-178 TOAST
47" / 60"



R-554 YELLOW
47" / 60"



R-241 PHOENIX **NEW**
47"



R-177 BURGUNDY
47" / 60"



R-244 DUN **NEW**
47"



R-099 WHITE
47" / 60"



R-115 CREAM
47"



R-133 CINNAMON
47"



R-139 HEATHER BEIGE
47" / 60"



R-101 MANDARIN
47"



R-105 SALMON
47"



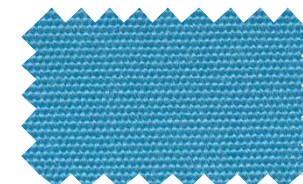
R-104 CHESTNUT
47" / 60"



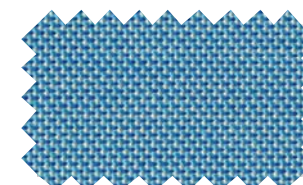
R-156 BROWN
47" / 60"



R-181 COFFEE **NEW**
47"



R-193 LIGHT BLUE
47"



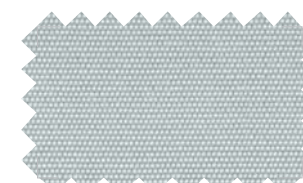
R-229 SAPPHIRE **NEW**
47"



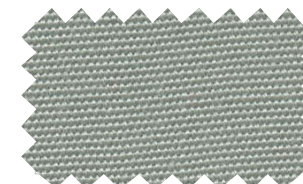
R-175 CAPTAIN NAVY
47" / 60"



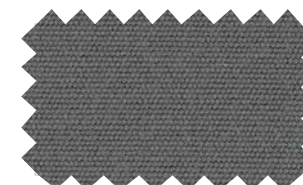
R-142 EMERALD
47" / 60"



R-114 PEARL
47"



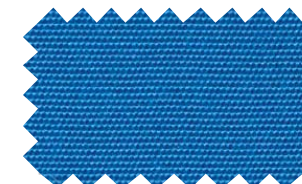
R-138 CADET GREY
47" / 60"



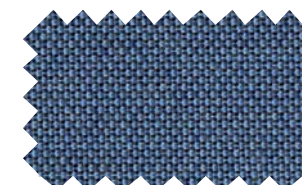
R-198 NICKEL **NEW**
47" / 60"



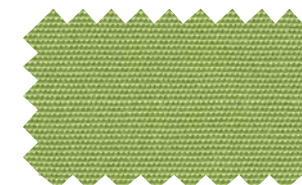
R-165 MAUVE
47"



R-169 STEEL BLUE
47"



R-232 DENIM **NEW**
47"



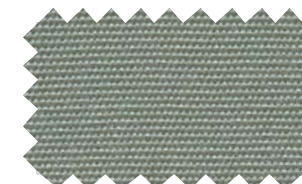
R-160 PISTACHIO
47"



R-163 GREEN
47" / 60"



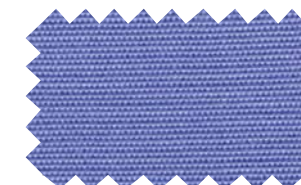
R-186 SILVER **NEW**
47"



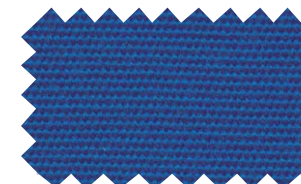
R-161 GREY
47" / 60"



R-164 CHARCOAL GREY
47" / 60"



R-110 LILLY
47"



R-172 BLUE
47" / 60"



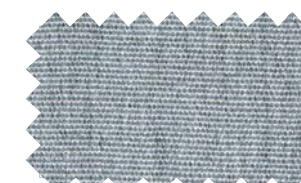
R-170 ADMIRAL BLUE
47" / 60"



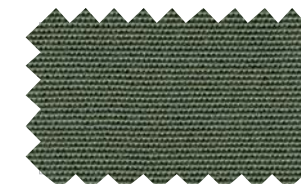
R-187 JADE **NEW**
47"



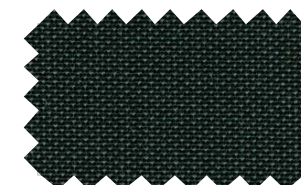
R-248 HUNTER **NEW**
47"



R-196 TITANIUM **NEW**
47"



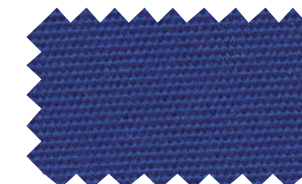
R-127 MOONROCK
47" / 60"



R-150 DARK GREY
47"



R-171 TURQUOISE
47"



R-173 DARK BLUE
47"



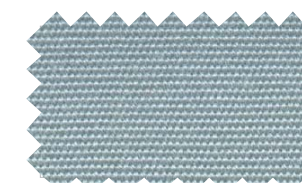
R-174 NAVY BLUE
47" / 60"



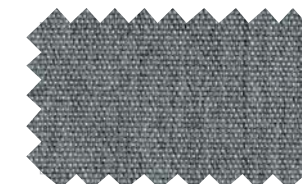
R-162 KHAKI
47"



R-102 FOREST GREEN
47" / 60"



R-123 ARGENTA GREY
47" / 60"



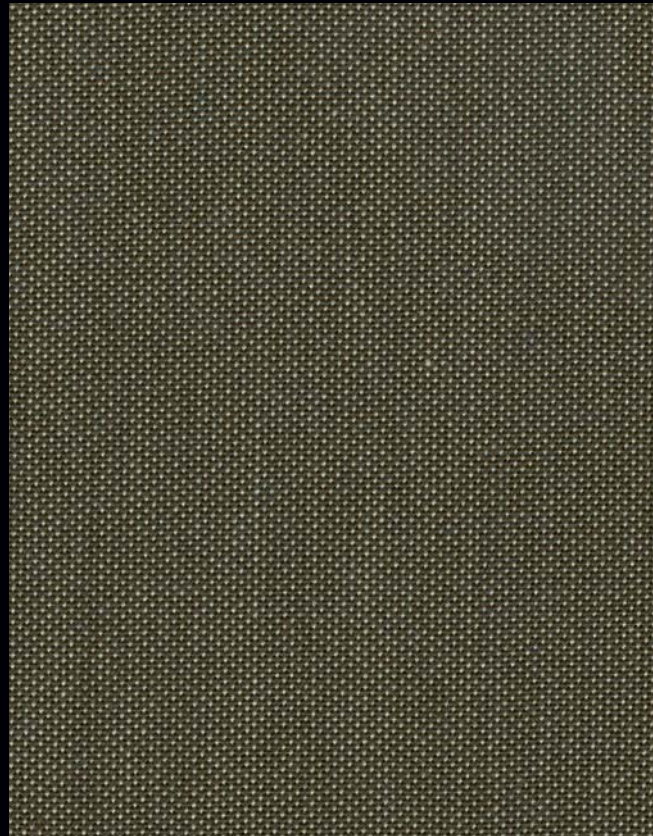
R-194 ASH **NEW**
47"



R-103 BLACK
47" / 60" / 78" / 98"



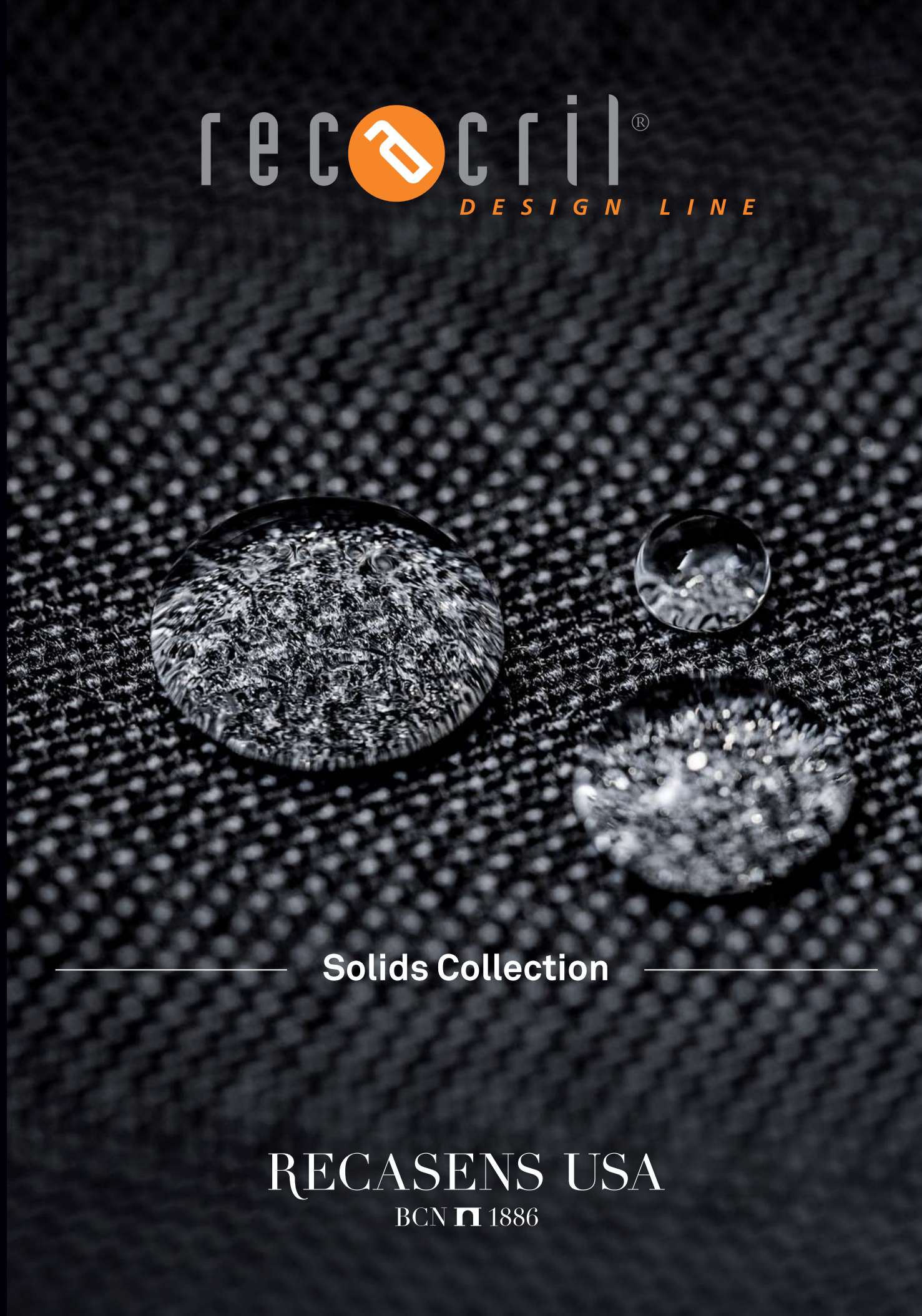
Superior performance fabric



- Tighter weave
- Superior stability
- Unsurpassed fade resistance
- Better to cut and sew
- Proprietary Infinity finishing process
- Long lasting water resistance
- Stain resistant
- Backed by 10 year warranty

Technical Specifications

FABRIC TYPE		
Name of Fabric	Recacril®	
Base Fabric	100% Solution Dyed Acrylic fibers	
CHARACTERISTICS		
Weight	9 oz. +/- 5%	
Standard Put Up	65.64 yards / 60 meters	
Finish	Fluorocarbon / Resin	
Finished Width	47"/ 120 cm	
Styles	71 solids	
Limited Warranty	10 years	
SPECIFICATIONS	TEST RESULTS	TEST METHOD
UV Resistance	1500 + hours	AATCC-16
Abrasion Rating	40,000 Rubs	ASTM-4157
Hydrostatic	40 cm	AATCC-127 Method B
Puncture Strength	38 lbs	ASTM-751
WARP / WEFT		
Tear Strength	11.5 lbs / 7.7 lbs	ASTM D-2261
Tensile Strength	287 lbs / 149 lbs	ASTM D-5034 Grab
Shrinkage	0.10% / 0%	Method 5804
Stretch	0% / 0%	ASTM D-2594



Solids Collection

RECASENS USA
BCN  1886



Warranty

Because S.A. Recasens' fabrics are manufactured with only the highest-quality raw materials and the most rigorous quality assurance procedures, we offer a 10 year warranty on Recacril.

The warranty protects against significant loss of strength and color in normal atmospheric conditions. This warranty does not apply against deterioration of any kind due to abusive use, accidental burns, negligence, vandalism, perforations, natural disasters or acts of nature. Normal wear, weather soiling, or stains from environmental pollution or other sources are not covered.

The product must be properly installed and maintained. The warranty, if applicable, does not cover labor, frames, systems and installation supplied by the dealer.

Please refer to www.recasensusa.com/commitment for a complete copy of the warranty.

Infinity Process

The Recacril® and Recsystem canvases are treated with a special technological process to ensure the lasting quality of the fabric. In this process, nanoparticles completely cover the surface of the fibers in the fabric, forming a permanent coat. After treatment, both the surface and the inside of the fabric are permanently protected against dirt build-up, and adverse effects of a wide variety of atmospheric agents.

The low reactivity and high stability of the Infinity treatment endows long-term protection to the awning, especially against mildew, and provides excellent water and oil repellence.

Care and Cleaning

Proper care and cleaning should be taken to ensure the life of Recacril® outdoor fabrics.

For regular care and maintenance, the excess dirt should be brushed from the fabric using a soft brush; the fabric should then be sprayed with warm water (not exceeding 100° F) and air-dried.

Periodically, the fabric should undergo a more thorough cleaning. Again, brush fabric with a soft bristled brush, spray with warm water, then apply a gentle soap. Let stand for 10 to 20 minutes taking care not to let it dry, then rinse thoroughly and air-dry. Do not use detergents and/or solvents.

When possible, please make sure to leave retractable awnings deployed or extended until the fabric cover is dried completely. This will help prevent mildew from forming.

We're woven differently

DISTRIBUTED BY

RECASENS USA
BCN  1886

Phone: 888.726.9756
customerservices@recasensusa.com
www.recasensusa.com

